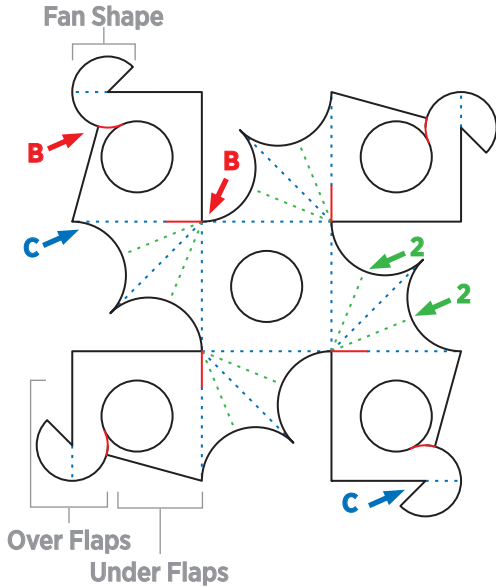


KAMIGAWA: NEON DYNASTY PAPERCRAFT

RETRACTABLE THROWING STAR

INSTRUCTIONS

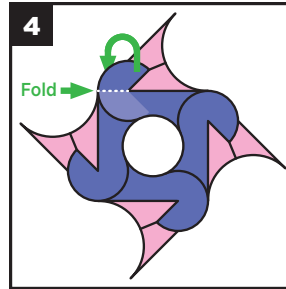


A: Print the page with the flat artwork on letter size paper and select "do not scale" or "Actual Size" so the model will be as large as possible.

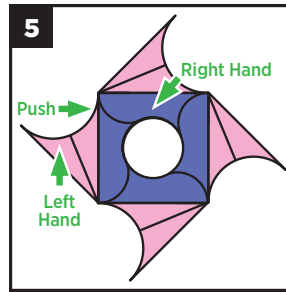
B: Cut out all the artwork including all solid white lines (shown in red). Don't forget to cut out all five circles.

C: Fold all dotted white lines (shown in blue and green) as accurately as possible. A good tip is to pinch along the folds with your thumbs before fully creasing.

D: Note the names of parts called out in gray. They will be used later in these instructions.



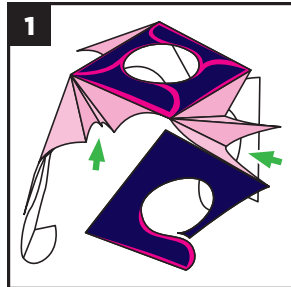
4: Repeat for the next two sections, bottom-right then bottom-left, putting all **Under Flaps** under all the **Over Flaps**, and being sure all **Fan Shaped** parts are on top. This should overlap like folding closed the top of a cardboard box. If done correctly, it should look like the diagram.



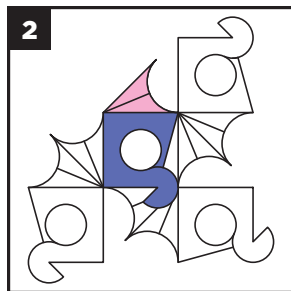
Fold and tuck inside each **Fan Shape** part, so that the **Fan Shape** goes inside and behind the corner of the square (see the green arrow).

5: Congratulations, you have a finished Papercraft Throwing Star!

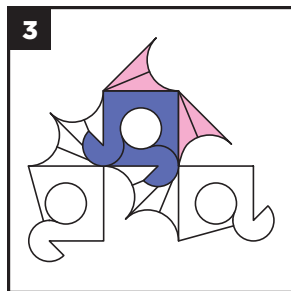
To retract the blades hold the star in your right hand holding firmly where shown. With your left hand grab the left blade where shown and push your hands together. The parts inbetween should bow apart a little, and the accordion fold you made earlier should be reformed. Repeat for each blade. The blades store inside the body of the star. To return to unretracted blades, simply reach inside with your left hand and pull them out while holding firmly with your right hand in the same spot as before.



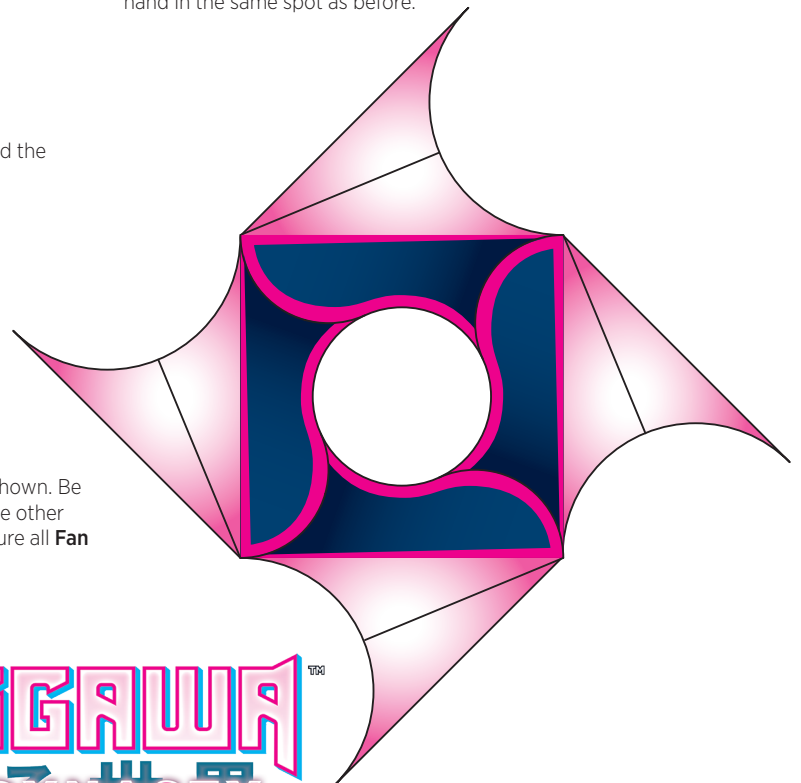
1: Reverse the folds shown in green in diagram #1 and the one to the left. This will create accordion folds for the light pink parts.



2: Unfold and lay flat white-side up and fold the top-left section over as shown.

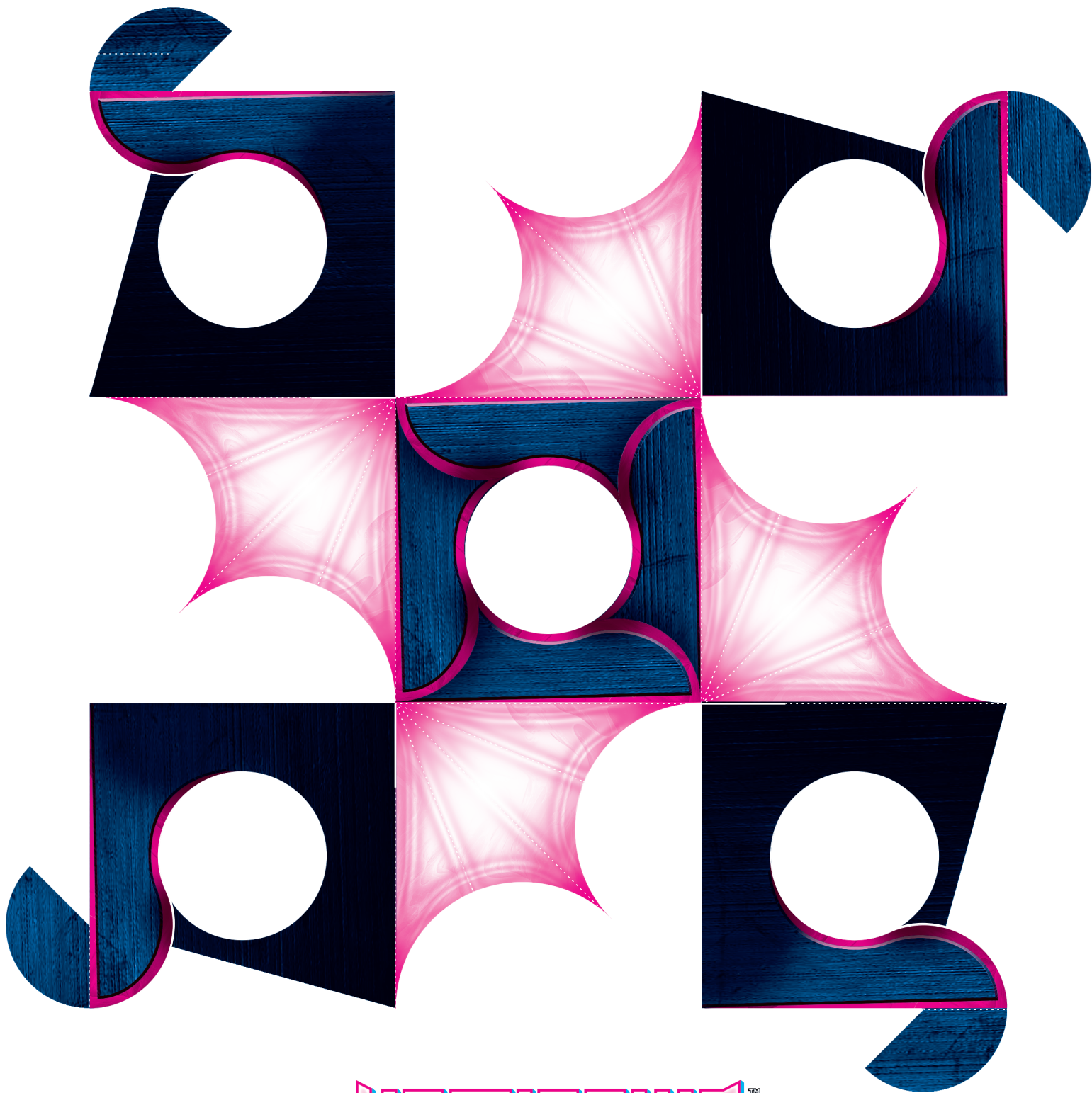


3: Fold the top-right section over next as shown. Be sure to put the **Under Flaps** parts under the other **Over Flaps** parts of each section, and be sure all **Fan Shape** parts are on top (as shown).





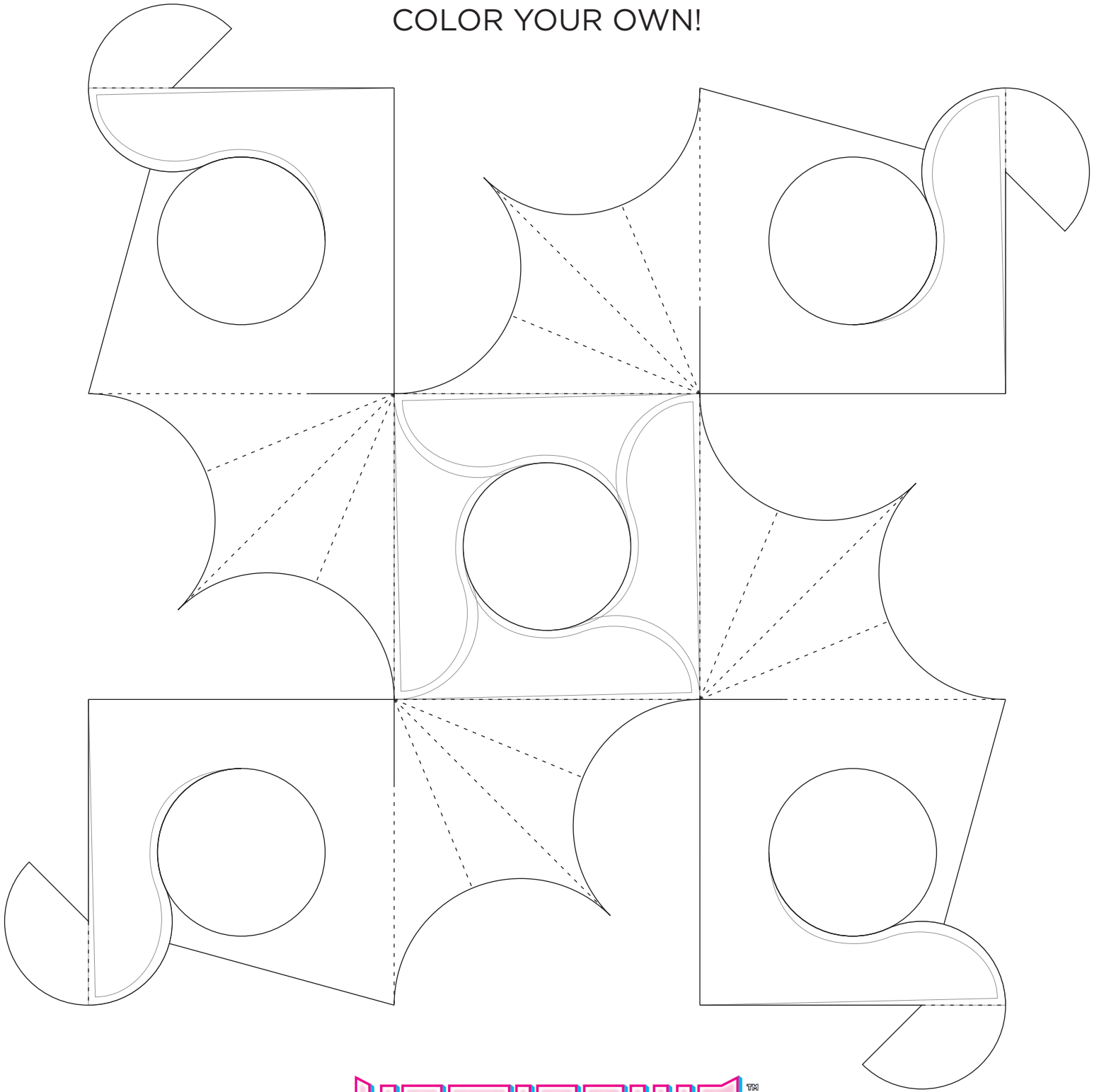
KAMIGAWA: NEON DYNASTY PAPERCRAFT
RETRACTABLE THROWING STAR



KAMIGAWA
輝ける世界
NEON DYNASTY



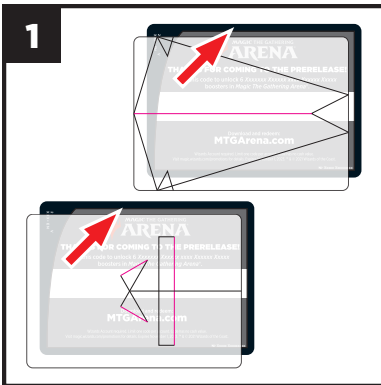
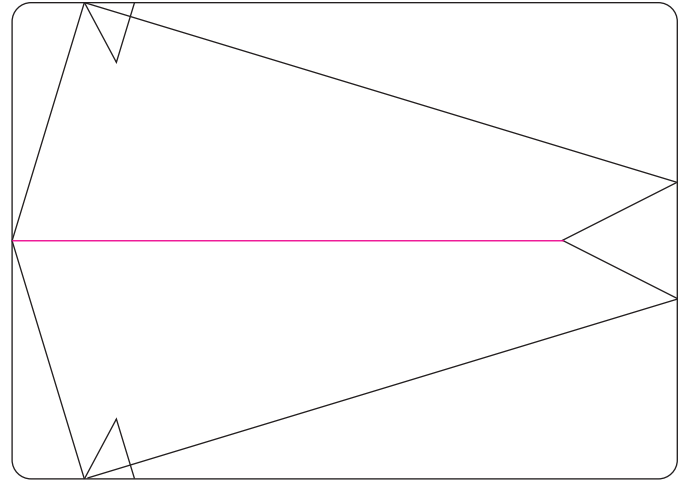
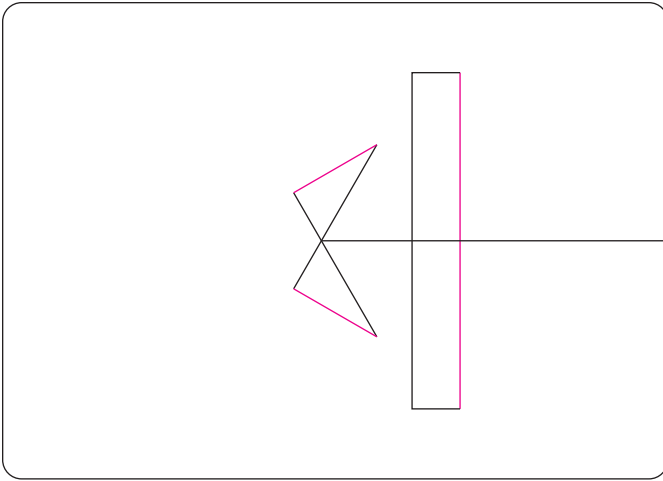
KAMIGAWA: NEON DYNASTY PAPERCRAFT
RETRACTABLE THROWING STAR
COLOR YOUR OWN!





KAMIGAWA: NEON DYNASTY PAPERCRAFT

DISPLAY STAND INSTRUCTIONS

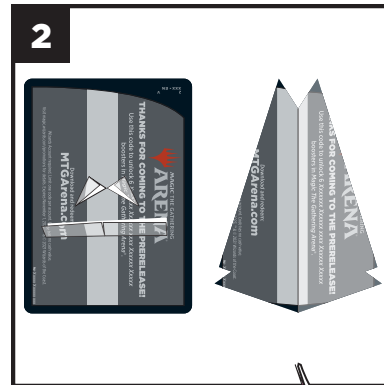


1: Cut out the two card shape rounded rectangles above.

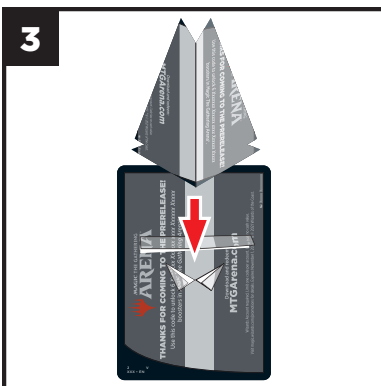
Select two cards you own to upcycle that no longer have value, such as used Arena Prerelease Code Cards.

Align the above cut-outs edge-to-edge with the cards and hold firmly. Tape may be added to help hold securely.

Carefully cut along all the black lines while continuing to keep the cutouts and cards aligned.

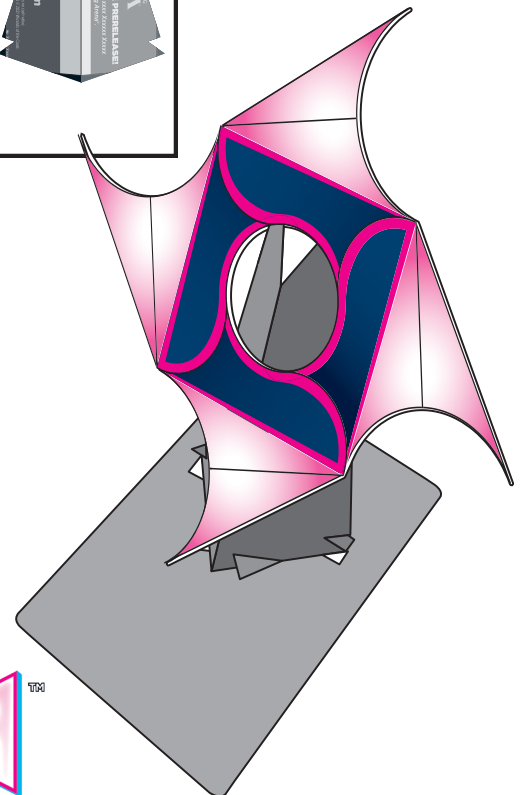


2: Fold the cards where indicated by the pink lines. You should now have two pieces that look like the diagram to the left. Note the names of the parts Base and Riser for the next steps.



3: Slide the Riser onto the Base as shown in the diagram. The cutout parts on the Base should be over the bottom edges of the Riser. The triangle Base cutouts should be near the fold in the Riser, and the rectangular cutouts in the Base snap over the little left and right side Triangular cutouts on the Riser.

Congratulations, you now have a finished papercraft stand.



KAMIGAWA
輝ける世界
NEON DYNASTY